

TIMED ONLINE

Land Auction

Des Moines County, Iowa

39.07±
acres
sells in 1 tract

Opens: Wednesday, July 28th

Closes: Wednesday, August 4, 2021 at 1PM

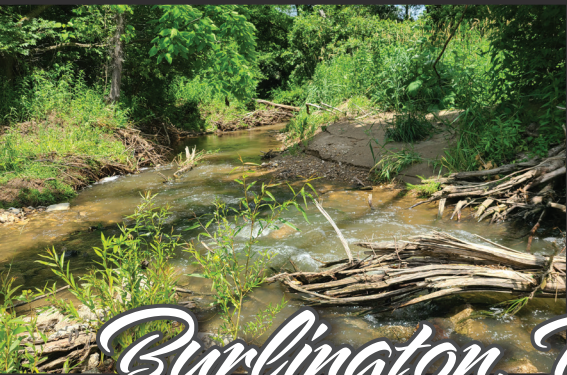
Looking for a timber getaway escape close to Burlington and on a hard surface road?
This land features timber with clearings for potential food plots along Honey Creek,
which runs through the property. Take advantage of all the recreational
opportunities this property has to offer.

Located in Sections 23 & 24 of Flint River Township, Des Moines County, Iowa.

SteffesGroup.com



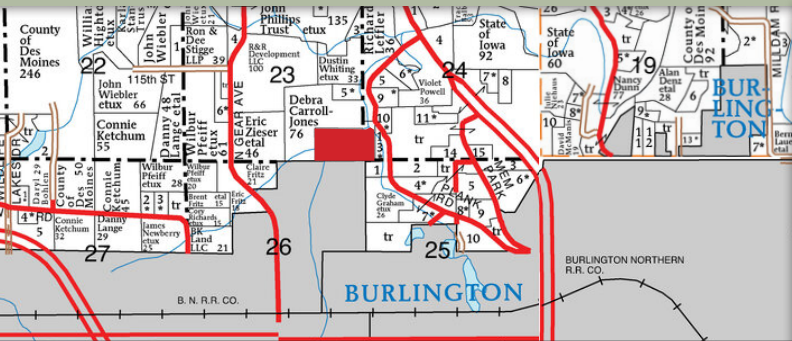
Steffes Group, Inc. 2245 East Bluegrass Road, Mt. Pleasant, IA 52641 | 319.385.2000



Burlington, Iowa

Land is located 1 ½ miles north of Burlington on Highway 61, then ¾ miles southwest on Plank Road.

Terms, additional information & photos available online at SteffesGroup.com



RICHARD J. LEFFLER ESTATE

Mark Leffler – Executor

Shane M. Wiley – Attorney for Estate

For information contact Steffes Group at 319.385.2000; Mason Holvoet, 319.470.7372 or Nate Larson, 319.931.3944



Steffes Group, Inc.
2245 East Bluegrass Road
Mt. Pleasant, Iowa 52641

PRESORTED
FIRST CLASS
US POSTAGE
PAID
PERMIT #315
FARGO, ND